



ANETI's Service Offer for Entrepreneurship promotion



ANETI'S MISSIONS IN PROMOTING ENTREPRENEURSHIP

Development of the Entrepreneurial Spirit



Job seekers, students, trainees at vocational training centres, etc.

Personalised support



Individual and collective support. Covers the entire value chain of setting up a business.

Promotion of the partnership



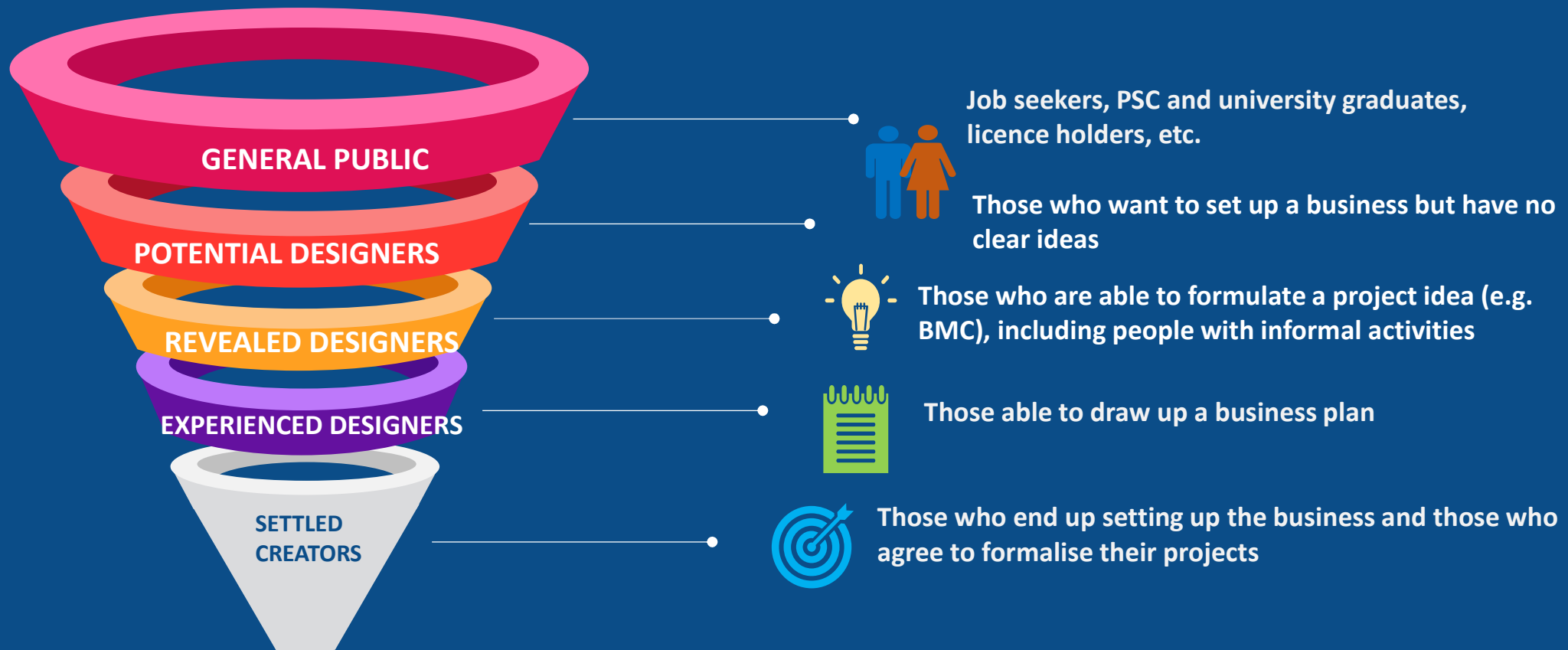
Public services, incubators, accelerators, financing structures, coworking spaces, etc.

Specific support



Funding for young offenders leaving re-education centres, **Support for** people with informal jobs, etc.

DEFINITION OF ANETI'S ENTREPRENEURSHIP TARGETS



ENTREPRENEURIAL SUPPORT PROGRAMME

TRANSVERSAL, INCLUSIVE, COLLECTIVE AND INDIVIDUAL



LOCAL INFRASTRUCTURE AND QUALIFIED ADVISERS

22

“Espaces Entreprendre”

140

Certified trainers

MORAINE CREE - GERME
Financial Education - Formalise
your project - Soft skills



180

Business start-up
advisers

70

Micro-enterprise
promotion units

PARTNERSHIP WITH THE ECOSYSTEM OF ENTREPRENEURSHIP



LOCAL INFRASTRUCTURE AND QUALIFIED ADVISERS

22

“Espaces Entreprendre”

140

Certified trainers

MORAINE CREE - GERME
Financial Education - Formalise
your project - Soft skills



180

Business start-up
advisers

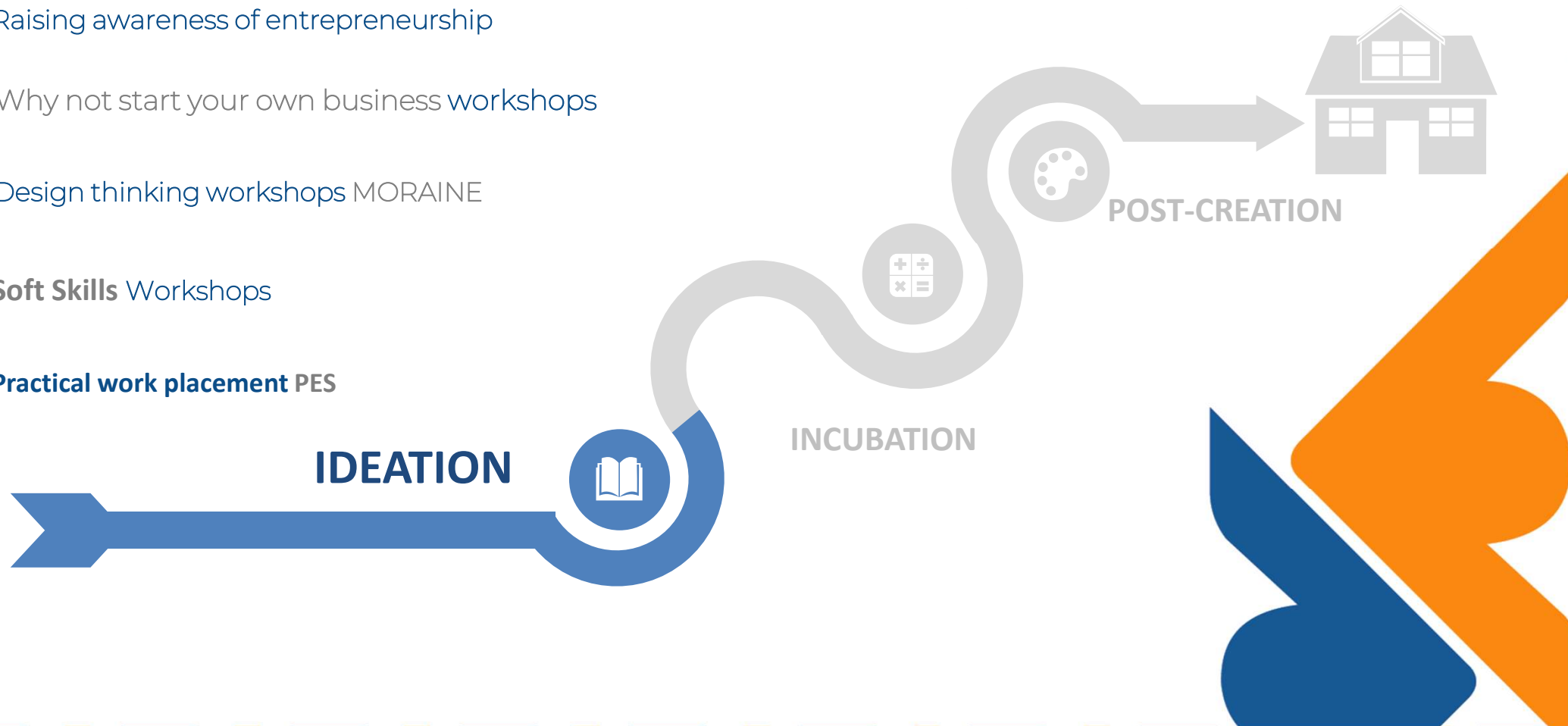
70

Micro-enterprise
promotion units

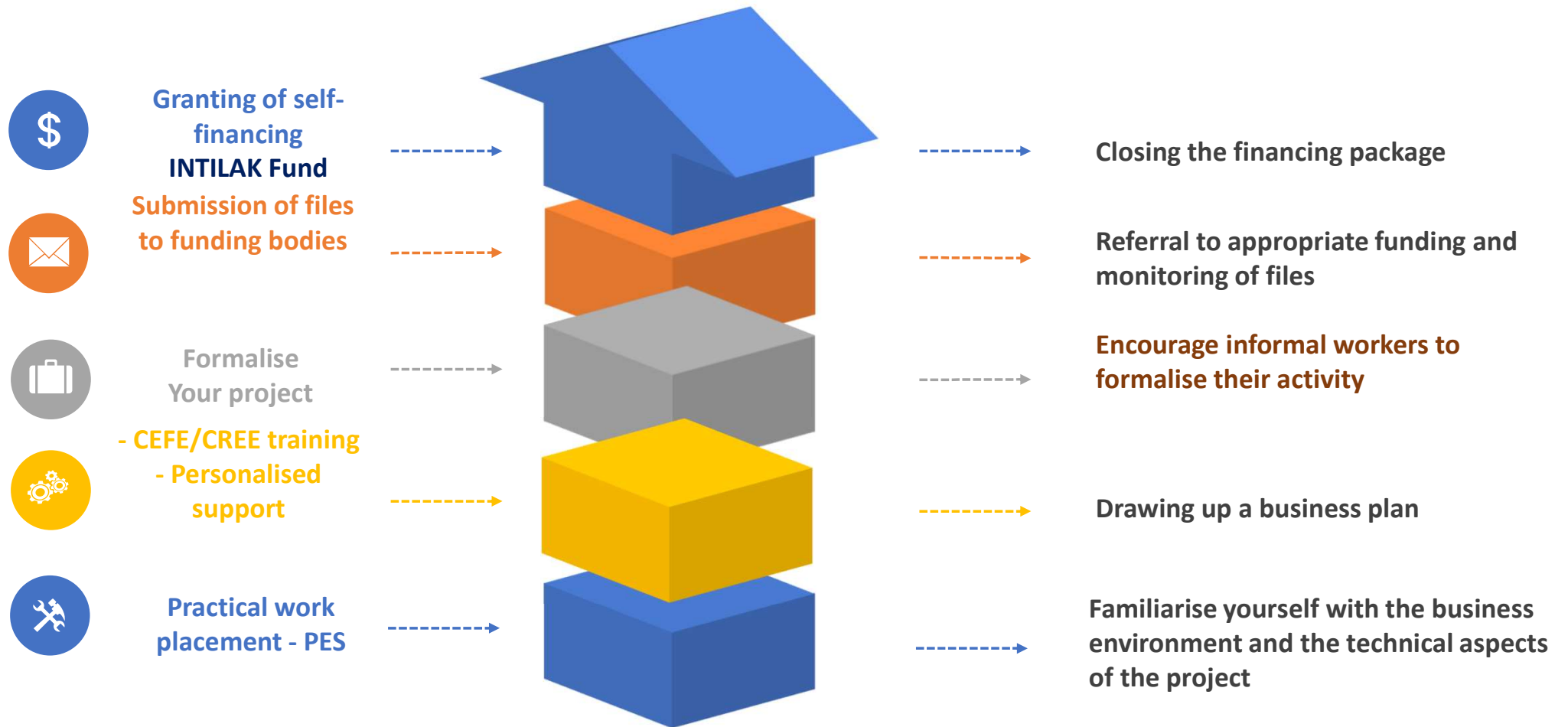
PRE-CREATION SUPPORT

IDEATION

- Raising awareness of entrepreneurship
- Why not start your own business workshops
- Design thinking workshops MORaine
- **Soft Skills** Workshops
- **Practical work placement PES**



PRE-CREATION SUPPORT INCUBATION



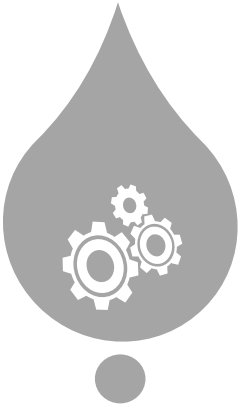
POST-CREATION SUPPORT



Regular monitoring and support visits



Additional management training



Additional training in technical fields



Soft skills



Support grant (200d) for 12 months



Project

Opportunity

Idea



Principle agreement

Presentation of the file to
the financing organisation

Business plan



Market research

Entrepreneurial training

PES

Soft skills

Search for information

Design thinking workshops

Individual interviews

Information/awareness



ANETI

الوكالة الوطنية للتشغيل و العمل المستقل
Agence Nationale pour l'Emploi
et le Travail Indépendant

**Support
Post-Creation**

ANETI'S ONGOING PROJECTS

Setting up a dedicated **SSE**
service offering

Review of methodologies and
support tools

Widespread use of Club
Business Coaching **CBC**



MODERNISING METHODOLOGIES AND SUPPORT TOOLS

Digitalisation of several components of the **support process**

Add **new tools that are** better adapted to ANETI's different **targets**

IDEATION



INCUBATION



POST-CREATION

Carry out a **diagnosis** before drawing up an **appropriate support plan**.
Supporting the new **business**
More **co-construction** and co-development **tools**



Design of an **entrepreneurial profiling tool**



SETTING UP A SERVICE OFFERING DEDICATED TO SSE

- Legal recognition of the SSE: law 2020-30
- Vector of social innovation
- Helps combat informal employment

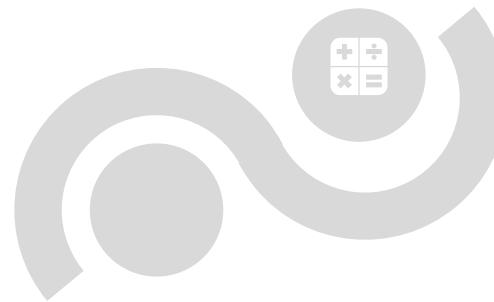
- Popularising and promoting SSE practices among young people: **Story telling**
- Designing **incubators** and **coworking spaces** that stimulate **collaborative working**

IDEATION-AWARENESS

INCUBATION

POST-CREATION

Taking into account the specific characteristics of SSE entities: **Not the same needs as a traditional company**
Further develop **partnerships** with the ecosystem and various structures



WIDESPREAD USE OF CLUB BUSINESS COACHING (CBC)

TARGET

ENTREPRENEURS ESTABLISHED WITHIN THE LAST YEAR

Surround yourself with professionals and find complementary skills and expertise

Getting out of isolation and networking with peers

Organising visits to companies

Organising theme days





THANK YOU FOR YOUR ATTENTION



www.emploi.nat.tn



National Agency for Employment and Self-Employment ANETI



aneti.channel



ANETI